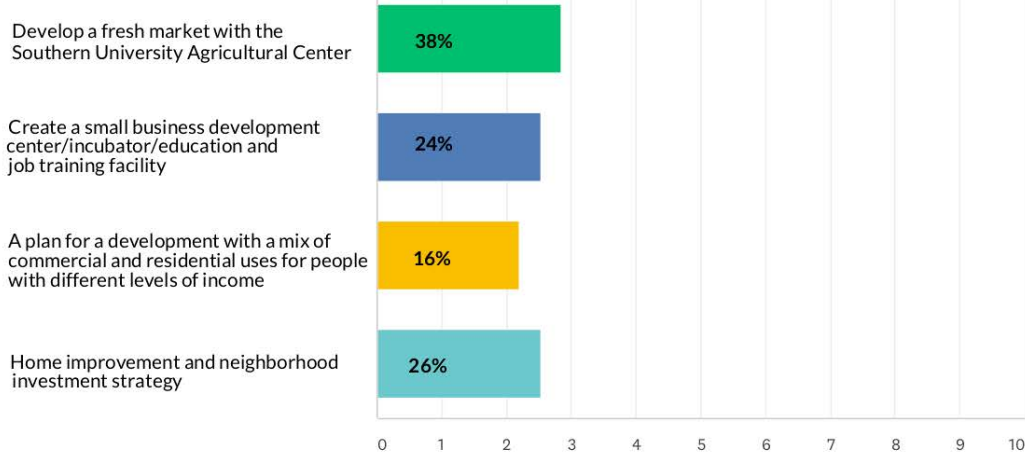


Economic Development Initiatives (Online Survey)



ECONOMIC DEVELOPMENT INITIATIVES

FRESH MARKET WITH THE SOUTHERN UNIVERSITY AGRICULTURAL CENTER (SU AG CENTER)



A fresh market will provide fresh fruit and vegetables to community residents, which isn't currently available in the Scotlandville community. Development of the fresh market will be developed with the SU Ag Center, which will increase connections between the university and the community. Additionally, a fresh market within the Scotlandville community will give residents access to fresh and healthy foods and enhance the community's attractiveness to new residents and businesses.

PLACE A STICKER NEXT TO YOUR PREFERRED OPTION



SMALL BUSINESS DEVELOPMENT CENTER/INCUBATOR/EDUCATION AND JOB TRAINING FACILITY



A small business development center is a facility that provides education, programming, resources, and training, to assist young startups and entrepreneurs with business development. This center can also provide classes on personal financial management and workforce training. This resource will increase business capacity and economic viability within Scotlandville.

PLACE A STICKER NEXT TO YOUR PREFERRED OPTION



A MIXED-USE COMMERCIAL & RESIDENTIAL DEVELOPMENT FOR PEOPLE OF DIFFERENT INCOME LEVELS



One of the goals of the strategic plan is to encourage mixed-use residential and commercial areas, which provides housing to people with different incomes. Developing a plan that provides housing for both students and non-students and is close to stores and services is one of the first steps to achieving this.

PLACE A STICKER NEXT TO YOUR PREFERRED OPTION



HOME IMPROVEMENT AND NEIGHBORHOOD INVESTMENT STRATEGY



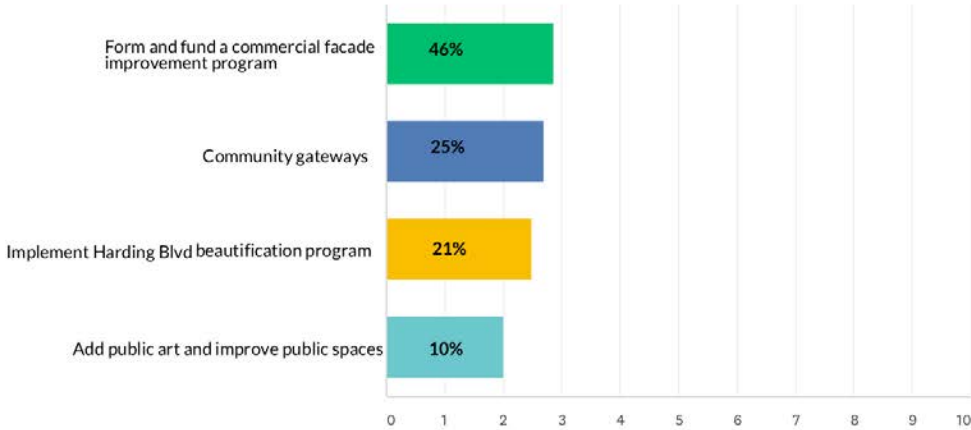
Home improvement programs provide existing homeowners with resources to make improvements to their homes. Neighborhood investment programs promote compatible residential development on vacant lots within or adjacent to the neighborhood. Neighborhood investment programs can also develop or rehabilitate vacant or under-used existing residential buildings, to provide more choices in housing, such as houses on small lots and townhomes. This initiative will support neighborhood reinvestment and rehabilitation.

PLACE A STICKER NEXT TO YOUR PREFERRED OPTION



COMMUNITY BEAUTIFICATION

Community Beautification (Online Survey)



COMMERCIAL FAÇADE IMPROVEMENT PROGRAM



A façade improvement program provides grant funds to pay for exterior improvements to commercial buildings to promote a positive image of commercial corridors. This initiative helps to encourage investment and overall revitalization of Scotlandville's commercial corridors.

PLACE A STICKER NEXT TO YOUR PREFERRED OPTION



COMMUNITY GATEWAYS



Gateways are attractive natural and cultural features that let people know they are entering Scotlandville. Gateways help people understand the history and culture of the community. Proposed locations include entrances to Scotlandville and Southern University. Gateways would help to define the Scotlandville community and instill community pride.

PLACE A STICKER NEXT TO YOUR PREFERRED OPTION



HARDING BOULEVARD BEAUTIFICATION PROGRAM



The Harding Beautification program includes adding trees, landscaping, and pedestrian amenities along Harding Blvd. Additionally, a design concept of the "Human Juke Box" is one idea that has been proposed for the Blvd, which envisions 3-D band figures added along the median to represent the Southern University music band.

PLACE A STICKER NEXT TO YOUR PREFERRED OPTION



PUBLIC ART AND IMPROVED PUBLIC SPACES IN SCOTLANDVILLE



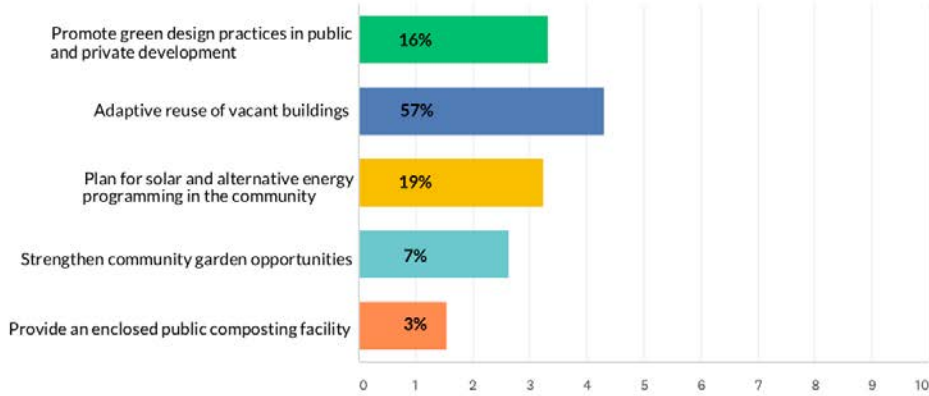
Community beautification using public art and improved community spaces will help to define the Scotlandville community, instill community pride, and enhance the community's attractiveness to businesses and residents.

PLACE A STICKER NEXT TO YOUR PREFERRED OPTION



COMMUNITY GREENING

Community Greening (Online Survey)

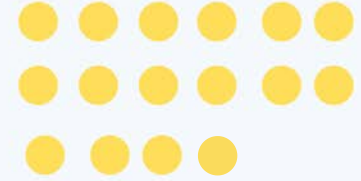


GREEN DESIGN PRACTICES IN PUBLIC AND PRIVATE DEVELOPMENT



Incorporating green design practices in development would reduce negative impacts on the environment and possibly reduce the cost of living in Scotlandville. This includes using building and landscape materials that reduce negative impacts on the environment, limiting the amount of pavement, and increasing green natural areas to help manage stormwater. This also includes providing opportunities for solar power to reduce long-term energy costs.

PLACE A STICKER NEXT TO YOUR PREFERRED OPTION



COMMUNITY GARDENS



Community gardens are managed by members of the community and grow fruits and vegetables that can be used by the community. A community garden would include youth and educational programming that teaches how to grow and cook healthy food. Southern University Ag Center currently provides to community participants free training and information on how to create and maintain new community gardens and is interested in expanding community involvement. Community gardens would make it easier for residents to get healthy foods.

PLACE A STICKER NEXT TO YOUR PREFERRED OPTION



COMMUNITY COMPOSTING

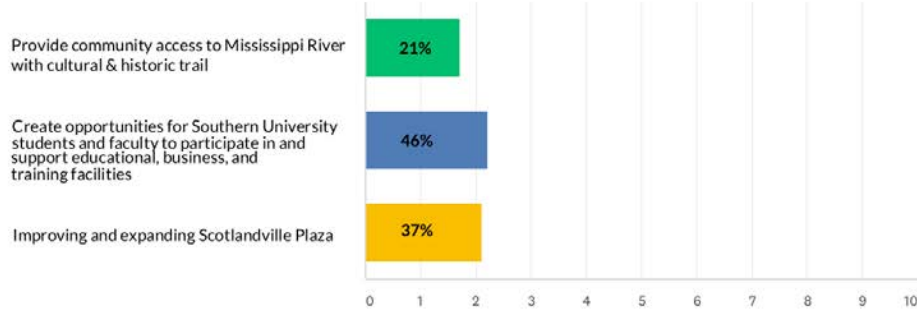


A community compost facility breaks down organic material, which can then be used to enhance local soils and support local food production. A composting facility would engage and educate community members in how to safely use composting to improve soils. This initiative benefits community social, economic, and environmental well being.

PLACE A STICKER NEXT TO YOUR PREFERRED OPTION



Enhance Community Culture (Online Survey)



ENHANCE COMMUNITY CULTURE

COMMUNITY ACCESS TO MISSISSIPPI RIVER WITH CULTURAL AND HISTORIC TRAIL



PLACE A STICKER NEXT TO YOUR PREFERRED OPTION



This project would develop a community space that highlights the rich culture and history of Scotlandville. The historical trail would begin along Harding Blvd, with improved pedestrian amenities to make it easier to walk between the neighborhood and the Mississippi Bluff. The Bluff would include educational, cultural and historical recreational amenities to create a community attraction that draws residents, neighbors, and persons from across the state and nation.

OPPORTUNITIES FOR SOUTHERN UNIVERSITY STUDENTS AND FACULTY TO PARTICIPATE IN AND SUPPORT SCOTLANDVILLE EDUCATIONAL, BUSINESS, AND TRAINING FACILITIES



PLACE A STICKER NEXT TO YOUR PREFERRED OPTION



This plan seeks to strengthen connections between Southern University and the Scotlandville community. One of the strategies to improve these connections is to increase opportunities for SU students and faculty to engage with community facilities, such as its local businesses and by participating in programming offered through community educational and training facilities.

IMPROVING AND EXPANDING SCOTLANDVILLE PLAZA



PLACE A STICKER NEXT TO YOUR PREFERRED OPTION

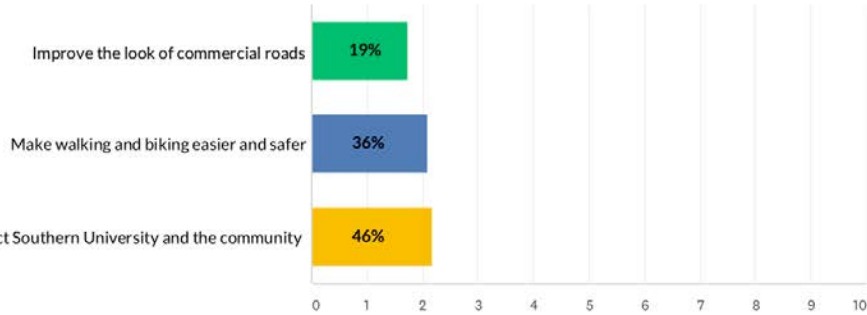


Scotlandville Plaza is the epicenter of the Scotlandville community. It is a cherished gathering space where community events take place. Improvements to the plaza's design will make it more usable for families and attract more neighborhood events.



COMMUNITY INFRASTRUCTURE

Improve Community Infrastructure (Online Survey)



IMPROVE THE LOOK OF COMMERCIAL ROADS



Improving commercial roads makes the community look more inviting, provides safe crosswalks and appropriately designed public space along streets for people to walk safely and comfortably. Improving commercial roads includes developing building standards to make it easier and more inviting to walk along the roads. These changes would include requirements to place buildings closer to the road; putting windows and doors that open onto the road to make it feel safer, and providing landscaping.

PLACE A STICKER NEXT TO YOUR PREFERRED OPTION



MAKE WALKING AND BIKING EASIER AND SAFER THROUGHOUT THE SCOTLANDVILLE COMMUNITY



Improving roadways to allow residents to get around the Scotlandville community comfortably without a car promotes community health by encouraging other ways of travel such as walking and biking. Making walking and biking easier entails placing safe crosswalks, wider sidewalks and bicycle lanes on existing roadways so bicycles can also travel safely. Implementing a community-wide bike-sharing program to make bicycles more accessible will also increase community biking.

PLACE A STICKER NEXT TO YOUR PREFERRED OPTION



CONNECT SOUTHERN UNIVERSITY AND THE COMMUNITY



Improving physical connections between Southern University and Scotlandville will provide easier access for students to use Scotlandville business and will increase communications and partnerships between the university and the community.

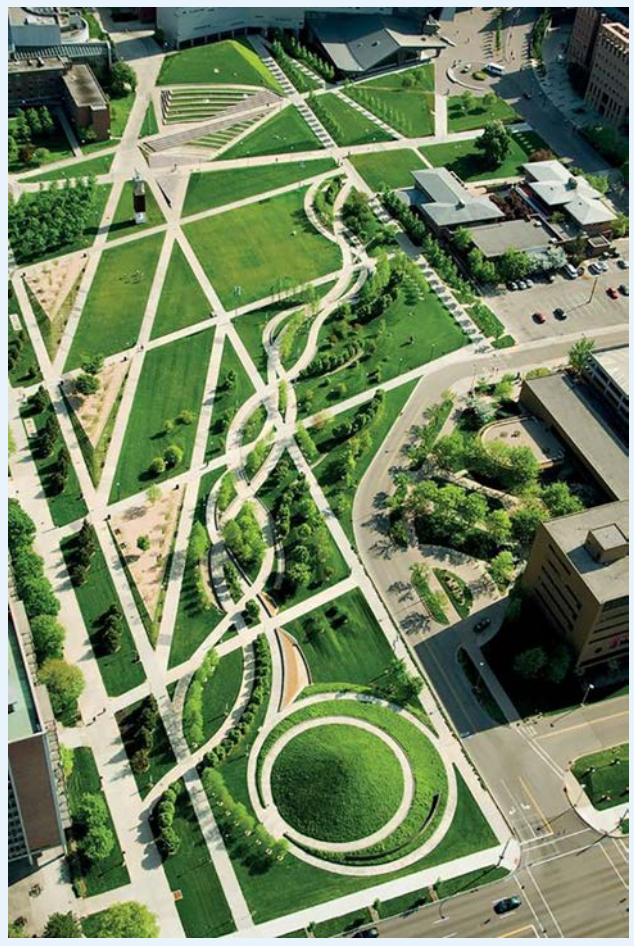
PLACE A STICKER NEXT TO YOUR PREFERRED OPTION



INITIAL CONCEPTUAL DESIGN

SCOTLANDVILLE PLAZA

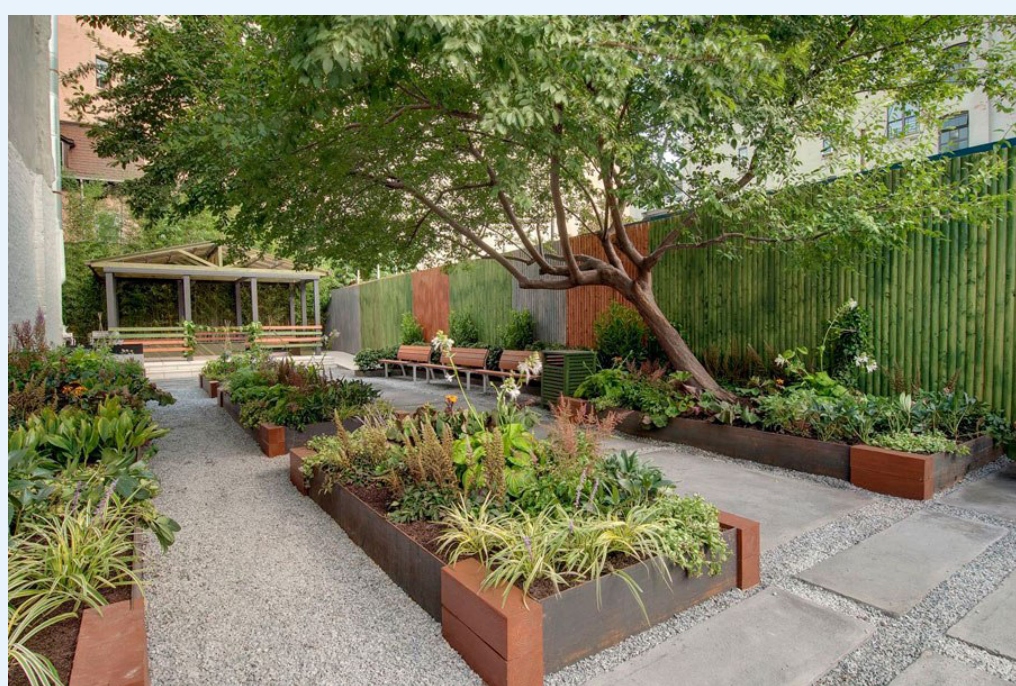
1. GREENWAY PARK



2. GAZEBO & ARBOR



3. COMMUNITY GARDEN



4. CHILDREN'S PLAYGROUND



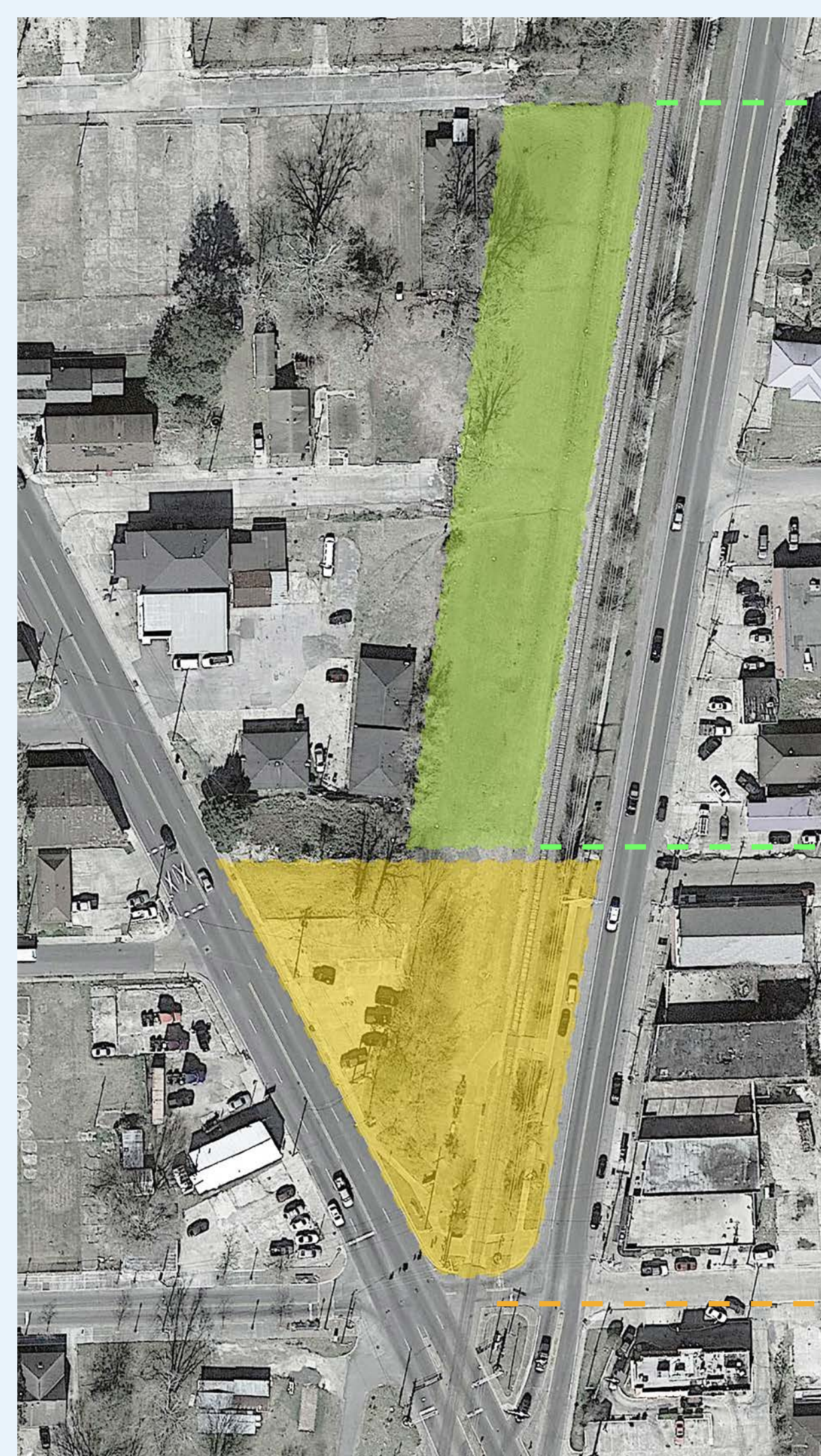
5. PAVILION



6. WATER FEATURE



7. CLOCK TOWER



Phase II

Reach out and open up

Greenway provides beautification, a destination, and connects walkers and bikers from nearby neighborhoods and the community.

Phase I

Everyday and celebration days

A park for everyday activities and a destination for celebrations. (Includes a pavilion, designated spaces for vendors and kids, a community garden and other community activities)